

Largo Medical Center

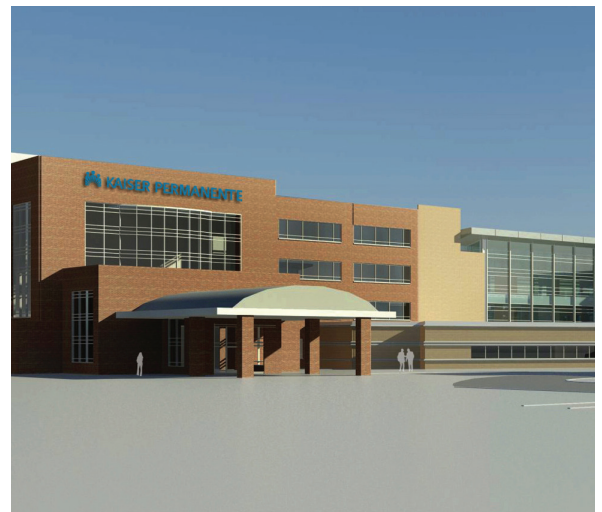
July 2010

As part of the Kaiser Permanente Mid-Atlantic Region Strategic Plan, several “Specialty Hubs” are being developed in order to provide enhanced care to Kaiser Permanente members. A “Hub” is a full service medical office building, with the capability to provide comprehensive outpatient services for more complex conditions. The Hub will contain the following services to achieve these goals:

- Full range of primary and specialty care departments
- Oncology and Infusion services able to treat patients on an outpatient basis
- Minor Injury and Urgent Care facilities
- Clinical Decision Units to provide outpatient observation services to the urgent care clinic
- Ambulatory Surgery Centers able to perform outpatient operations
- Outpatient procedure suites able to offer complex diagnostic and therapeutic interventions.
- Full radiology capability, including CT, MRI and interventional radiology

The Largo Project located at 1221 Mercantile Lane in Upper Marlboro, Maryland, consists of the Parking Garage, Building Additions and Renovations. The opening is schedule for January 2013.

The Largo parking garage consists of the design and construction of a four story parking facility, accommodating seven hundred thirteen (713) spaces totaling approximately 240,000 sq ft. The current design is for a pre-cast concrete structure. Columns, beams and double T decking are to be a structural pre-cast concrete system. The building height will be approximately 30’ with a footprint of 181.67’ wide by 333’ long. The parking structure will complement the campus by continuing design elements of the existing building and new addition, such as the use of brick, curtain wall and metal panel feature walls. Two elevators will be provided in the main vertical circulation core.



The Largo Addition consists of the construction of a new three-story 106,000 sq ft addition on the south side of the building. The new addition will house an ASC, CDU, Imaging departments, Cardio/ Pulmonary departments, Ambulatory Service Center with six OR’s, and a Pharmacy. The structure will consist of steel I-beam construction with a brick exterior which will complement the campus by continuing the design elements of the existing building. Site work includes the addition of bio-retention ponds, a walking path and the addition of a 90 space parking lot.

The Largo Renovation Project is a partial renovation of the existing four story, 130,000 sf ft Medical Office Building (MOB). The renovation consists primarily of the re-allocation and refurbishing of exam rooms, office space and treatment rooms with architectural upgrades in the lobbies, painting of walls and the upgrade of existing hall carpeting.

Diversity Participation

To learn about other Kaiser Permanente projects in the Mid-Atlantic region, please visit <http://www.anotherapproach.com/kp>. If you are a qualified small, minority, woman or disabled veteran owned business, log in and register your company today.

Kaiser Permanente believes the health of its’ communities extends beyond the physical well being of the inhabitants. As a participating member of the communities we serve, Kaiser Permanente recognizes the well being of a community includes socio-economic strength as the foundation of a healthy environment.

Largo Medical Center

Gary G. Fennig

Program Director

Jacobs Project Management Company

11900-C Bournfield Way

Silver Spring, MD 20904

Office 301.816.5757

Gary.Fennig@jacobs.com | www.jacobs.com